

VITI SENZA FINE - CORONE ELICOIDALI
WORM SHAFTS - WORM GEARS
INDICE SERIE
SERIES INDEX


	SERIE SERIES	MATERIALE MATERIAL	TRATTAMENTO TERMICO HEAT-TREATMENT	SUPERFICIE SURFACE	DENTATURA TOOTH SYSTEM	PAG PAGE
VITE WORM SHAFTS	700	20MnCr5	cementazione case-hardening	finitura di utensile milled teeth	DX - RH	124
CORONA WORM GEARS	705	Bronzo Bronze	non incluso not included	finitura di utensile milled teeth	DX - RH	124

VITI SENZA FINE - CORONE ELICOIDALI
HOLLOW WORMS - WORM GEARS
INDICE SERIE
SERIES INDEX


	SERIE SERIES	MATERIALE MATERIAL	TRATTAMENTO TERMICO HEAT-TREATMENT	SUPERFICIE SURFACE	DENTATURA TOOTH SYSTEM	PAG PAGE
VITE WORM SHAFTS	710	20MnCr5	cementazione case-hardening	finitura di utensile milled teeth	DX - RH	126
CORONA WORM GEARS	715	Bronzo Bronze	non incluso not included	finitura di utensile milled teeth	DX - RH	126



VITI SENZA FINE - CORONE ELICOIDALI

WORM SHAFTS - WORM GEARS

Viti senza fine SERIE 700

Worm shafts SERIES 700

Materiale - Material: **20MnCr5**

Superficie: finitura di utensile - Surface: milled teeth

Dentatura: DX - Tooth system: RH

Trattamento termico: cementazione

Heat-treatment: case-hardening

Corone elicoidali SERIE 705

Worm gears SERIES 705

Materiale - Material: **Bronzo - Bronze**

Superficie: finitura di utensile - Surface: milled teeth

Dentatura: DX - Tooth system: RH

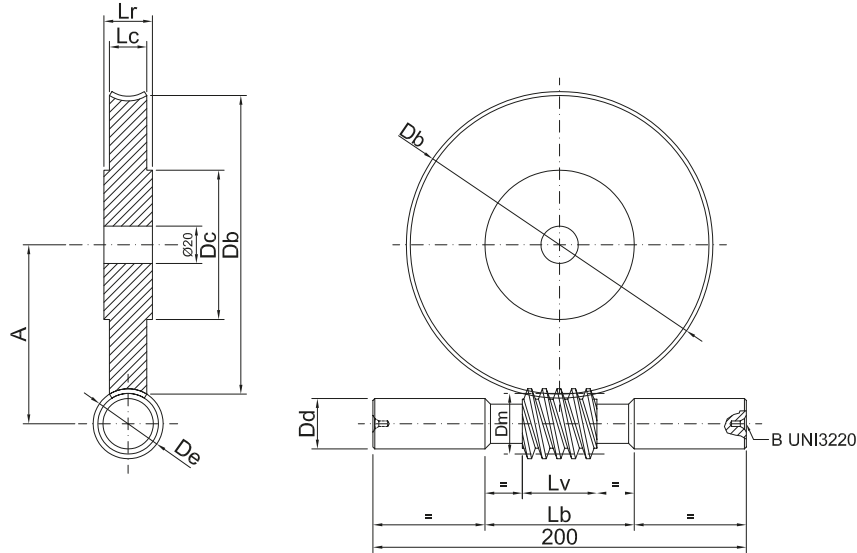
Trattamento termico: non incluso

Heat-treatment: not included

CODICE VITE WORM SHAFT CODE	Rapporto riduzione Gear ratio	Modulo Module	Principi Number of threads	Z ruota Number of teeth	Dd	Dm	De	Lb	Lv	Db	Dc	Lr	Lc	Codice corona Worm gear code	T2 max (n1=1400)	Angolo d'elica Helix angle
INTERASSE 50 - CENTRE DISTANCE 50																
1WS31R050007	7	2,7	4	28	22	24,4	29,8	66	50	75,6	50	25	19,9	1WG39R050007	44,88	23,88°
1WS31R050010	10	2,5	3	30	22	25	30	66	50	75	50	25	18,4	1WG39R050010	42,90	16,7°
1WS31R050015	15	2,5	2	30	22	25	30	66	50	75	50	25	16,4	1WG39R050015	41,15	11,3°
1WS31R050020	20	1,9	2	40	22	24	27,8	66	50	76	50	25	18	1WG39R050020	38,79	8,99°
1WS31R050025	25	1,5	2	50	22	25	28	66	40	75	50	25	14,2	1WG39R050025	23,63	6,84°
1WS31R050030	30	2,5	1	30	22	25	30	66	50	75	50	25	17,9	1WG39R050030	49,24	5,71°
1WS31R050040	40	1,9	1	40	22	24	27,8	66	40	76	50	25	17,2	1WG39R050040	41,73	4,53°
1WS31R050050	50	1,5	1	50	22	25	28	66	40	75	50	25	14,2	1WG39R050050	24,90	3,43°
1WS31R050060	60	1,3	1	60	22	22	24,6	66	40	78	50	25	12,3	1WG39R050060	20,08	3,38°
1WS31R050080	80	1	1	80	18	20	22	66	35	80	50	25	10,3	1WG39R050080	8,09	2,86°
INTERASSE 63 - CENTRE DISTANCE 63																
1WS31R063007	7	3	4	28	27	42	48	83	63	84	50	28	26,3	1WG39R063007	77,44	15,95°
1WS31R063010	10	2,5	4	40	27	26	31	83	63	100	50	28	22	1WG39R063010	79,26	21,04°
1WS31R063015	15	3,15	2	30	27	31,5	37,8	83	63	94,5	50	25	18,9	1WG39R063015	78,70	11,31°
1WS31R063020	20	2,5	2	40	27	26	31	83	63	100	50	25	19,2	1WG39R063020	86,45	10,89°
1WS31R063025	25	2	2	50	27	26	30	83	63	100	50	25	15,6	1WG39R063025	61,29	8,75°
1WS31R063030	30	3	1	30	27	36	42	83	63	90	50	25	19,5	1WG39R063030	72,88	4,76°
1WS31R063040	40	2,5	1	40	27	26	31	83	63	100	50	25	19,5	1WG39R063040	95,78	5,49°
1WS31R063050	50	2	1	50	27	26	30	83	50	100	50	25	15,6	1WG39R063050	65,10	4,4°
1WS31R063060	60	1,6	1	60	27	30	33,2	83	50	96	50	25	15,9	1WG39R063060	36,60	3,05°
1WS31R063080	80	1,25	1	80	27	26	28,5	83	50	100	50	25	12,5	1WG39R063080	13,90	2,75°
INTERASSE 75 - CENTRE DISTANCE 75																
1WS31R075007	7	3	4	28	42	66	72	95	75	84	50	35	31,9	1WG39R075007	62,03	10,3°
1WS31R075010	10	3,5	3	30	42	45	52	95	75	105	50	35	32,9	1WG39R075010	154,90	13,13°
1WS31R075015	15	3,5	2	30	42	45	52	95	75	105	50	28	25,3	1WG39R075015	128,17	8,84°
1WS31R075020	20	2,75	2	40	42	40	45,5	95	75	110	50	28	23,3	1WG39R075020	118,87	7,83°
1WS31R075025	25	2,5	2	50	22	25	30	95	75	125	50	28	19,2	1WG39R075025	137,76	11,31°
1WS31R075030	30	3,75	1	30	32	37,5	45	95	75	112,5	50	28	22,2	1WG39R075030	150,46	5,71°
1WS31R075040	40	2,75	1	40	42	40	45,5	95	75	110	50	28	21,1	1WG39R075040	108,28	3,93°
1WS31R075050	50	2,25	1	50	32	37,5	42	95	60	112,5	50	28	21,3	1WG39R075050	100,75	3,43°
1WS31R075060	60	2	1	60	32	30	34	95	60	120	50	25	18,9	1WG39R075060	104,54	3,81°
1WS31R075080	80	1,5	1	80	32	30	33	95	60	120	50	25	13,6	1WG39R075080	24,51	2,86°

VITI SENZA FINE - CORONE ELICOIDALI

WORM SHAFTS - WORM GEARS



In caso di prodotti personalizzati a disegno, invia la tua richiesta a - In case you need customized products, please send your request to: info@gambinimeccanica.it

CODICE VITE WORM SHAFT CODE	Rapporto riduzione Gear ratio	Modulo Module	Principi Number of threads	Z ruota Number of teeth	Dd	Dm	De	Lb	Lv	Db	Dc	Lr	Lc	Codice corona Worm gear code	T2 max (n1=1400)	Angolo d'elica Helix angle
INTERASSE 80 - CENTRE DISTANCE 80																
1WS31R080007	7	4	4	28	32	48	56	100	80	112	60	35	32,9	1WG39R080007	188,70	18,43°
1WS31R080010	10	3,15	4	40	32	34	40,3	100	80	126	60	35	26	1WG39R080010	170,75	20,33°
1WS31R080015	15	4	2	30	32	40	48	100	80	120	60	35	24,3	1WG39R080015	176,65	11,31°
1WS31R080020	20	3,15	2	40	32	34	40,3	100	80	126	60	35	24,1	1WG39R080020	186,03	10,5°
1WS31R080025	25	2,5	2	50	32	35	40	100	70	125	60	28	19,8	1WG39R080025	125,50	8,13°
1WS31R080030	30	4	1	30	32	40	48	100	70	120	60	35	26,7	1WG39R080030	216,70	5,71°
1WS31R080040	40	3,15	1	40	32	34	40,3	100	70	126	60	28	24,1	1WG39R080040	204,00	5,29°
1WS31R080050	50	2,5	1	50	32	35	40	100	70	125	60	28	19,8	1WG39R080050	133,15	4,09°
1WS31R080060	60	2	1	60	32	40	44	100	60	120	60	28	17,6	1WG39R080060	69,27	2,86°

INTERASSE 100 - CENTRE DISTANCE 100																
1WS31R100010	10	4	4	40	42	40	48	120	100	160	70	38	30,6	1WG39R100010	349,00	21,8°
1WS31R100015	15	5	2	30	42	50	60	120	100	150	70	35	29,6	1WG39R100015	350,36	11,31°
1WS31R100020	20	4	2	40	42	40	48	120	90	160	70	35	30,6	1WG39R100020	402,59	11,31°
1WS31R100025	25	3,15	2	50	42	42,5	48,8	120	80	157,5	70	35	27,2	1WG39R100025	308,53	8,43°
1WS31R100030	30	5	1	30	42	50	60	120	90	150	70	38	32,9	1WG39R100030	438,18	5,71°
1WS31R100040	40	4	1	40	42	40	48	120	90	160	70	38	30,6	1WG39R100040	443,97	5,71°
1WS31R100050	50	3,15	1	50	42	42,5	48,8	120	90	157,5	70	38	24,1	1WG39R100050	279,50	4,24°
1WS31R100060	60	2,5	1	60	42	50	55	120	80	150	70	28	25,5	1WG39R100060	146,50	2,86°
1WS31R100080	80	2	1	80	42	40	44	120	80	160	70	25	20,4	1WG39R100080	97,85	2,86°

INTERASSE 125 - CENTRE DISTANCE 125																
1WS31R125010	10	5	4	40	52	50	60	149	125	200	70	48	38,3	1WG39R125010	705,43	21,8°
1WS31R125015	15	6	2	30	52	70	82	149	125	180	70	51	48,8	1WG39R125015	842,25	9,73°
1WS31R125020	20	5	2	40	52	50	60	149	125	200	70	48	38,3	1WG39R125020	814,70	11,31°
1WS31R125025	25	4	2	50	52	50	58	149	100	200	70	48	33,5	1WG39R125025	658,55	9,09°
1WS31R125030	30	6,5	1	30	52	55	68	149	125	195	70	48	46,6	1WG39R125030	1064,70	6,74°
1WS31R125040	40	5	1	40	52	50	60	149	125	200	70	48	38,3	1WG39R125040	899,60	5,71°
1WS31R125050	50	4	1	50	52	50	58	149	110	200	70	48	33,5	1WG39R125050	704,07	4,57°
1WS31R125060	60	3,2	1	60	52	58	64,4	149	110	192	70	38	31,3	1WG39R125060	389,90	3,16°
1WS31R125080	80	2,5	1	80	52	50	55	149	100	200	70	38	25,5	1WG39R125080	200,50	2,86°



VITI SENZA FINE - CORONE ELICOIDALI

HOLLOW WORMS - WORM GEARS

Viti senza fine SERIE 710

Hollow worms SERIES 710

Materiale - Material: **20MnCr5**

Superficie: finitura di utensile - Surface: milled teeth

Dentatura: dx - Tooth system: rh

Trattamento termico: cementazione

Heat-treatment: case-hardening

Corone elicoidali SERIE 715

Worm gears SERIES 715

Materiale - Material: **Bronzo - Bronze**

Superficie: finitura di utensile - Surface: milled teeth

Dentatura: dx - Tooth system: rh

Trattamento termico: non incluso

Heat-treatment: not included

CODICE VITE WORM SHAFT CODE	Rapporto riduzione Gear ratio	Modulo Module	Principi Number of threads	Z ruota Number of teeth	Df	Dm	De	Da	b	Le	Lv	Db	Dc	Lr	Lc	Codice corona Worm gear code	T2 max (n1=1400)	Angolo d'elica Helix angle
INTERASSE 50 - CENTRE DISTANCE 50																		
1WR31R050007	7	2,7	4	28	17	24,4	29,8	12	4	60	50	75,6	50	25	19,9	1WG39R050007	44,88	23,88°
1WR31R050010	10	2,5	3	30	18	25	30	12	4	60	50	75	50	25	18,4	1WG39R050010	42,90	16,7°
1WR31R050015	15	2,5	2	30	18	25	30	12	4	60	50	75	50	25	16,4	1WG39R050015	41,15	11,3°
1WR31R050020	20	1,9	2	40	19	24	27,8	12	4	60	50	76	50	25	18	1WG39R050020	38,79	8,99°
1WR31R050025	25	1,5	2	50	21	25	28	15	5	50	40	75	50	25	14,2	1WG39R050025	23,63	6,84°
1WR31R050030	30	2,5	1	30	18	25	30	12	4	60	50	75	50	25	17,9	1WG39R050030	49,24	5,71°
1WR31R050040	40	1,9	1	40	19	24	27,8	12	4	50	40	76	50	25	17,2	1WG39R050040	41,73	4,53°
1WR31R050050	50	1,5	1	50	21	25	28	15	5	50	40	75	50	25	14,2	1WG39R050050	24,90	3,43°
1WR31R050060	60	1,3	1	60	18	22	24,6	12	4	50	40	78	50	25	12,3	1WG39R050060	20,08	3,38°
1WR31R050080	80	1	1	80	17	20	22	12	4	45	35	80	50	25	10,3	1WG39R050080	8,09	2,86°

INTERASSE 63 - CENTRE DISTANCE 63

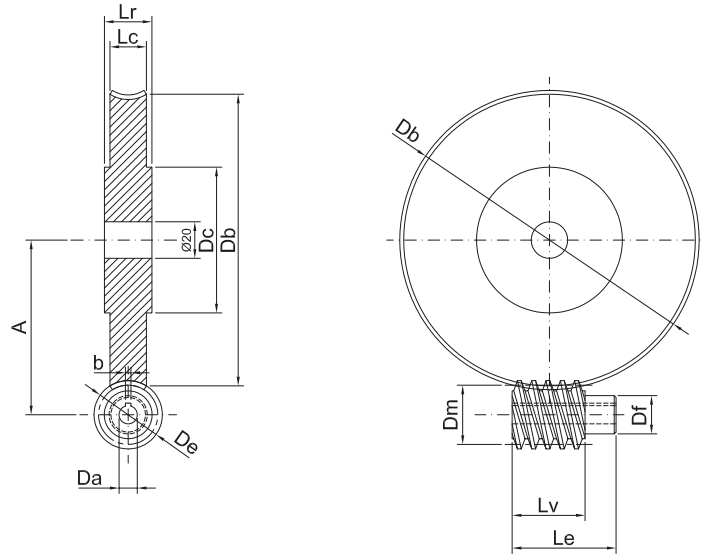
1WR31R063007	7	3	4	28	34	42	48	26	8	75	63	84	50	28	26,3	1WG39R063007	77,44	15,95°
1WR31R063010	10	2,5	4	40	19	26	31	13	5	75	63	100	50	28	22	1WG39R063010	79,26	21,04°
1WR31R063015	15	3,15	2	30	23	31,5	37,8	17	5	75	63	94,5	50	25	18,9	1WG39R063015	78,70	11,31°
1WR31R063020	20	2,5	2	40	19	26	31	13	5	75	63	100	50	25	19,2	1WG39R063020	86,45	10,89°
1WR31R063025	25	2	2	50	20	26	30	14	5	75	63	100	50	25	15,6	1WG39R063025	61,29	8,75°
1WR31R063030	30	3	1	30	27	36	42	20	6	75	63	90	50	25	19,5	1WG39R063030	72,88	4,76°
1WR31R063040	40	2,5	1	40	19	26	31	13	5	75	63	100	50	25	19,5	1WG39R063040	95,78	5,49°
1WR31R063050	50	2	1	50	20	26	30	14	5	62	50	100	50	25	15,6	1WG39R063050	65,10	4,4°
1WR31R063060	60	1,6	1	60	25	30	33,2	18	6	62	50	96	50	25	15,9	1WG39R063060	36,60	3,05°
1WR31R063080	80	1,25	1	80	22	26	28,5	16	5	62	50	100	50	25	12,5	1WG39R063080	13,90	2,75°

INTERASSE 75 - CENTRE DISTANCE 75

1WR31R075007	7	3	4	28	55	66	72	30	8	90	75	84	50	35	31,9	1WG39R075007	62,03	10,3°
1WR31R075010	10	3,5	3	30	35	45	52	27	8	90	75	105	50	35	32,9	1WG39R075010	154,90	13,13°
1WR31R075015	15	3,5	2	30	35	45	52	27	8	90	75	105	50	28	25,3	1WG39R075015	128,17	8,84°
1WR31R075020	20	2,75	2	40	32	40	45,5	24	8	90	75	110	50	28	23,3	1WG39R075020	118,87	7,83°
1WR31R075025	25	2,5	2	50	18	25	30	12	4	90	75	125	50	28	19,2	1WG39R075025	137,76	11,31°
1WR31R075030	30	3,75	1	30	27	37,5	45	20	6	90	75	112,5	50	28	22,2	1WG39R075030	150,46	5,71°
1WR31R075040	40	2,75	1	40	32	40	45,5	24	8	90	75	110	50	28	21,1	1WG39R075040	108,28	3,93°
1WR31R075050	50	2,25	1	50	30	37,5	42	22	6	75	60	112,5	50	28	21,3	1WG39R075050	100,75	3,43°
1WR31R075060	60	2	1	60	24	30	34	17	5	75	60	120	50	25	18,9	1WG39R075060	104,54	3,81°
1WR31R075080	80	1,5	1	80	25	30	33	18	6	75	60	120	50	25	13,6	1WG39R075080	24,51	2,86°

VITI SENZA FINE - CORONE ELICOIDALI

HOLLOW WORMS - WORM GEARS



In caso di prodotti personalizzati a disegno, invia la tua richiesta a - In case you need customized products, please send your request to: info@gambinimeccanica.it

CODICE VITE WORM SHAFT CODE	Rapporto riduzione Gear ratio	Modulo Module	Principi Number of threads	Z ruota Number of teeth	Df	Dm	De	Da	b	Le	Lv	Db	Dc	Lr	Lc	Codice corona Worm gear code	T2 max (n1=1400)	Angolo d'elica Helix angle
INTERASSE 80 - CENTRE DISTANCE 80																		
1WR31R080007	7	4	4	28	37	48	56	28	8	100	80	112	60	35	32,9	1WG39R080007	188,70	18,43°
1WR31R080010	10	3,15	4	40	25	34	40,3	18	6	100	80	126	60	35	26	1WG39R080010	170,75	20,33°
1WR31R080015	15	4	2	30	29	40	48	22	6	100	80	120	60	35	24,3	1WG39R080015	176,65	11,31°
1WR31R080020	20	3,15	2	40	25	34	40,3	18	6	100	80	126	60	35	24,1	1WG39R080020	186,03	10,5°
1WR31R080025	25	2,5	2	50	28	35	40	21	6	90	70	125	60	28	19,8	1WG39R080025	125,50	8,13°
1WR31R080030	30	4	1	30	29	40	48	22	6	90	70	120	60	35	26,7	1WG39R080030	216,70	5,71°
1WR31R080040	40	3,15	1	40	25	34	40,3	18	6	90	70	126	60	28	24,1	1WG39R080040	204,00	5,29°
1WR31R080050	50	2,5	1	50	28	35	40	21	6	90	70	125	60	28	19,8	1WG39R080050	133,15	4,09°
1WR31R080060	60	2	1	60	34	40	44	26	8	80	60	120	60	28	17,6	1WG39R080060	69,27	2,86°

INTERASSE 100 - CENTRE DISTANCE 100																		
1WR31R100010	10	4	4	40	29	40	48	22	6	125	100	160	70	38	30,6	1WG39R100010	349,00	21,8°
1WR31R100015	15	5	2	30	36	50	60	28	8	125	100	150	70	35	29,6	1WG39R100015	350,36	11,31°
1WR31R100020	20	4	2	40	29	40	48	22	6	125	90	160	70	35	30,6	1WG39R100020	402,59	11,31°
1WR31R100025	25	3,15	2	50	33	42,5	48,8	25	8	125	80	157,5	70	35	27,2	1WG39R100025	308,53	8,43°
1WR31R100030	30	5	1	30	36	50	60	28	8	125	90	150	70	38	32,9	1WG39R100030	438,18	5,71°
1WR31R100040	40	4	1	40	29	40	48	22	6	125	90	160	70	38	30,6	1WG39R100040	443,97	5,71°
1WR31R100050	50	3,15	1	50	33	42,5	48,8	25	8	125	90	157,5	70	38	24,1	1WG39R100050	279,50	4,24°
1WR31R100060	60	2,5	1	60	42	50	55	30	8	125	80	150	70	28	25,5	1WG39R100060	146,50	2,86°
1WR31R100080	80	2	1	80	34	40	44	26	8	125	80	160	70	25	20,4	1WG39R100080	97,85	2,86°

INTERASSE 125 - CENTRE DISTANCE 125																		
1WR31R125010	10	5	4	40	36	50	60	28	8	160	125	200	70	48	38,3	1WG39R125010	705,43	21,8°
1WR31R125015	15	6	2	30	54	70	82	30	8	160	125	180	70	51	48,8	1WG39R125015	842,25	9,73°
1WR31R125020	20	5	2	40	36	50	60	28	8	160	125	200	70	48	38,3	1WG39R125020	814,70	11,31°
1WR31R125025	25	4	2	50	39	50	58	30	8	160	100	200	70	48	33,5	1WG39R125025	658,55	9,09°
1WR31R125030	30	6,5	1	30	37	55	68	28	8	160	125	195	70	48	46,6	1WG39R125030	1064,70	6,74°
1WR31R125040	40	5	1	40	36	50	60	28	8	160	125	200	70	48	38,3	1WG39R125040	899,60	5,71°
1WR31R125050	50	4	1	50	39	50	58	30	8	160	110	200	70	48	33,5	1WG39R125050	704,07	4,57°
1WR31R125060	60	3,2	1	60	49	58	64,4	30	8	160	110	192	70	38	31,3	1WG39R125060	389,90	3,16°
1WR31R125080	80	2,5	1	80	42	50	55	30	8	160	100	200	70	38	25,5	1WG39R125080	200,50	2,86°